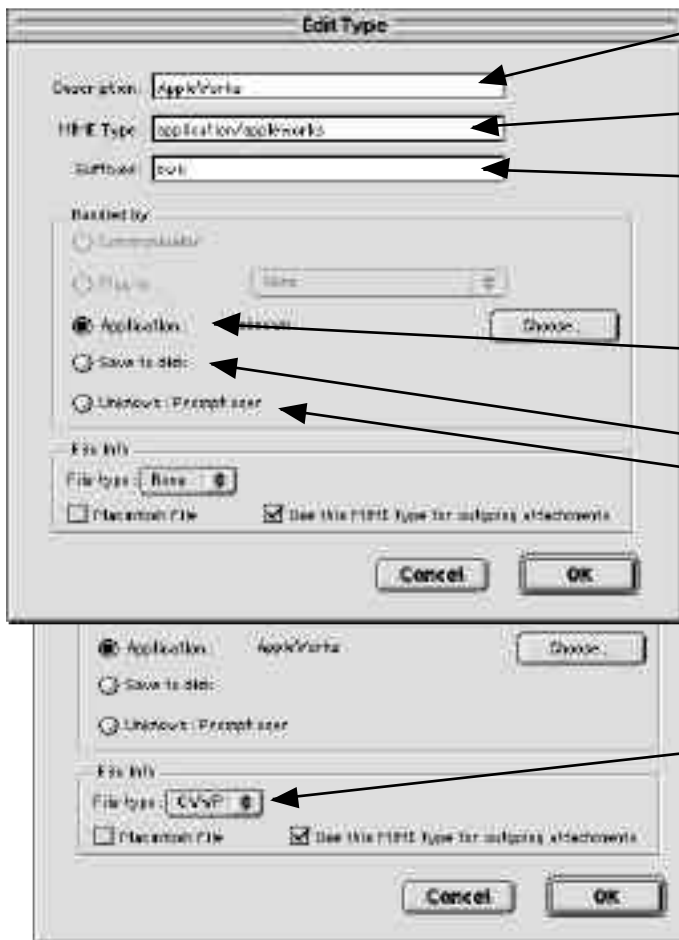
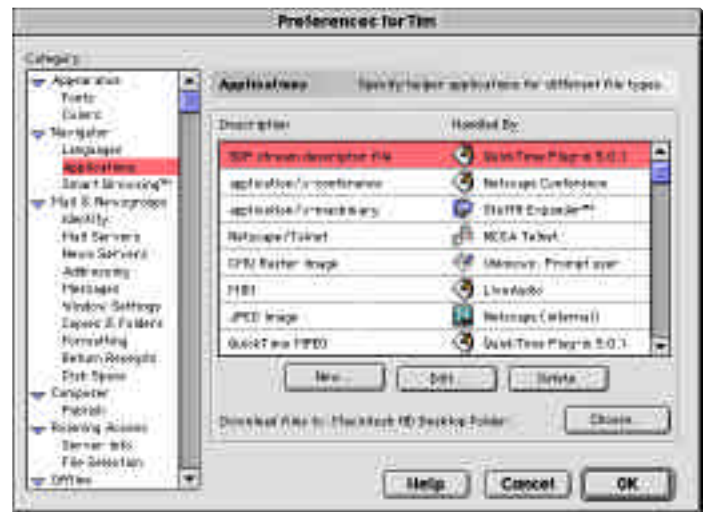


Configuring Your Browser to Handle All Kinds of Files

Netscape Navigator (version 4.7x)

1. From the **Edit** menu select **Preferences...**
2. In the **Category** listing, click on **Applications** (if you don't see it, click on the arrow next to **Navigator**). The list on the right shows all the applications and plug-ins for which the browser is already configured.
3. To edit a description, find the application in the list (in no understandable order!), click once on it and click **Edit...**
4. To add a new description, click **New...**



Description: is anything you want to use to identify this setting.

MIME type: is type of file/file identifier

Suffixes: the file type extenders that apply to this application.

Decide if you want files of this type to be:

- **Application:** click **Choose...** to find the program which will be used to open this type of file.
- **Saved to disk**
- **Unknown:** **Prompt user** will give the user some options of what to do with the file.

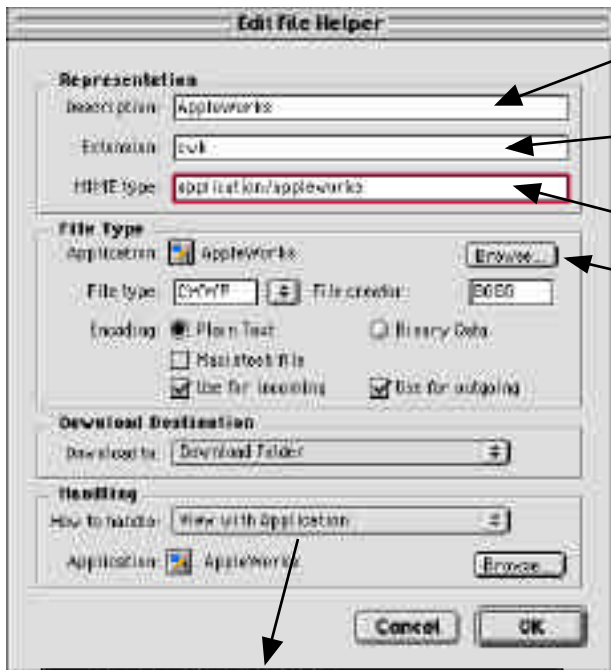
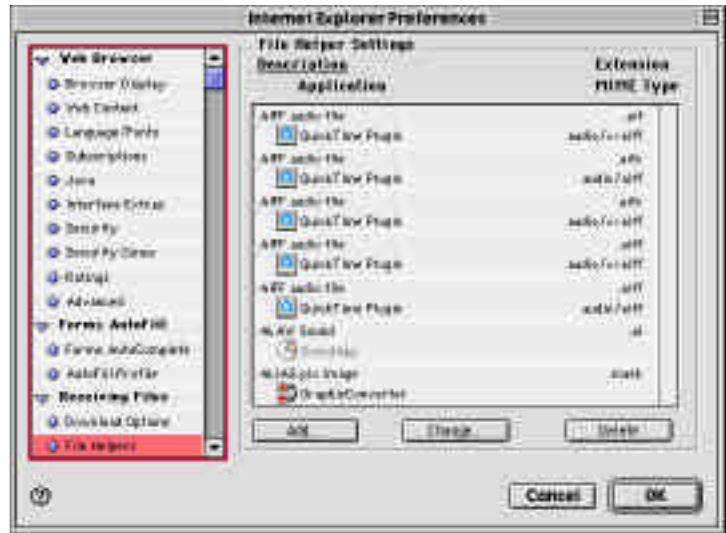
After the application has been selected, the **File type** info will be set automatically.

Don't click the box for **Macintosh File**.

Click **OK** to save the information for this type. In the **Preferences** window, click **OK** to save all changes.

Internet Explorer (version 4.x and 5.x)

1. From the **Edit** menu select **Preferences...**
2. In the left column, click on **File Helpers** (if you don't see it, click on the arrow next to **Receiving Files**). The list on the right shows all the applications and plug-ins for which the browser is already configured.
3. To edit a description, find the application in the list (in alpha order by the **Description** name), click once on it and click **Change...**
4. To add a new description, click **New...**



Description: is anything you want to use to identify this setting.

Extension: the file type extenders that apply to this application.

MIME type: is type of file/file identifier

Click the **Browse...** button and find the program that will open this file type. The **File type:** and **File creator:** will be filled in automatically. Don't change anything in the **Encoding:** section

In the **Handling** section use the popup menu next to **How to handle:** to select one of the choices. If you choose **View with Application** or **Post-Process with Application**, click the **Browse...** button to find the program that will open this file type.

If you choose **Save to File**, use the popup menu under **Download Destination** to identify the folder in which to store all files of this type.



When finished, click **OK** in the **Edit File Helper** window to save the settings for this file type. Click **OK** in the **Preferences** window to save all changes.